



21 High Street, Riseley, Bedford MK44 1DU



21 High Street
Riseley
Bedford
MK44 1DU

Price £280,000

Popular style two bedroom
home in a village location...

Entrance hall

Living room

Kitchen/dining room

Two double bedrooms

Family bathroom

Central heating

Gardens

Garage at the rear

- Council Tax Band B
- Energy Efficiency Rating D



Riseley is an extremely popular North Bedfordshire village...



This is an excellent opportunity to make a move out in to the country and to benefit from all that it has to offer.

We are delighted to offer for sale this well presented two-bedroom home that offers an entrance hall leading in to a living room with a spiral staircase providing access to the first floor.

At the rear of the property is a kitchen/dining room with a door leading out in to the garden. The kitchen area is well fitted with a full range of units.

On the first floor the main double bedroom is at the rear with a further smaller double bedroom overlooking the front. There is access from this room to a large loft space ideal for storage.

The accommodation is completed by a family bathroom.

Heating is via recently installed individual electrically powered radiators run off a 'smart' system. The windows are all PVCu double glazed.

There is a small front garden with a path leading to the front door and there is also an external storage cupboard. The rear garden is fully enclosed and laid to lawn. A gate at the rear gives access across a courtyard to the garage that has recently been reroofed.

Riseley is an extremely popular North Bedfordshire village with excellent access to both Bedford's and Kimbolton's amenities.

There are lots of countryside walks and the village has its own Primary School and is within the catchment of Sharnbrook Academy. There is a popular Public House/restaurant and a recently improved general store with a Post Office. Nearby Bedford and St Neots mainline railway stations offer fast and frequent services to London's St Pancras International station and beyond.





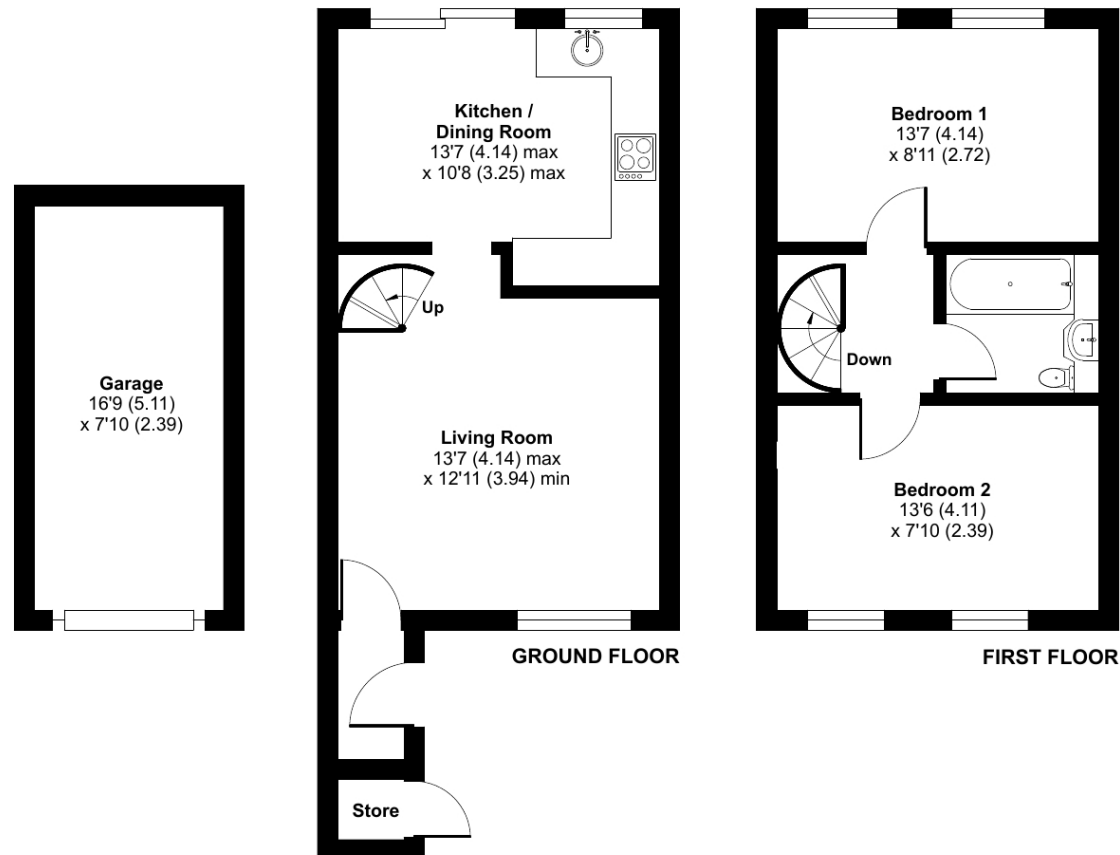
Riseley, Bedford, MK44

Approximate Area = 659 sq ft / 61.2 sq m (excludes garage)

Store = 7 sq ft / 0.7 sq m

Total = 666 sq ft / 61.8 sq m

For identification only - Not to scale



Floor plan produced in accordance with RICS Property Measurement Standards incorporating International Property Measurement Standards (IPMS2 Residential). © nitchecom 2023. Produced for Lane & Holmes. REF: 978526



01234 327744 | sales@laneandholmes.co.uk | www.laneandholmes.co.uk | 66-68 St Loyes Street, Bedford, Bedfordshire, MK40 1EZ 1EZ

Agents Notes: The agent has not tested any apparatus, equipment, fixtures & fittings or services and so cannot verify that they are in working order or fit for the purpose. A buyer is advised to obtain verification from their solicitor or surveyor. All photographs shown are for illustration only and may depict items that are not for sale or included in the sale of the property. Please note that we have not checked the situation with regards to planning consents, building regulation consents and any other relevant consent relating to this property and therefore, any interested applicant should carry out their own enquiries with the appropriate authorities. All measurements are approximate and for guidance only. The particulars do not form part of any contract and all properties are offered subject to contract.

